



OUR MISSION

We turn the worlds fastest growing waste stream into a force for good.

1000+

Collections / 9.7 NPS

300,000+

Assets processed per year



Founded in 2018, KOcycle focus on promoting circularity at the end of the technology lifecycle. We're an award winning B-Corp that puts our people and planet first, helping our clients align to the highest security and sustainability standards, promoting reuse wherever possible and helping to turn the worlds number one growing waste stream into a force for good.

OUR AWARDS



SPECIAL AWARD FOR SUSTAINABILITY WINNER



MOST SUSTAINABLE COMPANY





COMPANIES MAKING A DIFFERENCE WITH KOCYCLE



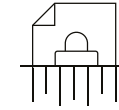
BACKED BY OUR EXPERT KNOWLEDGE



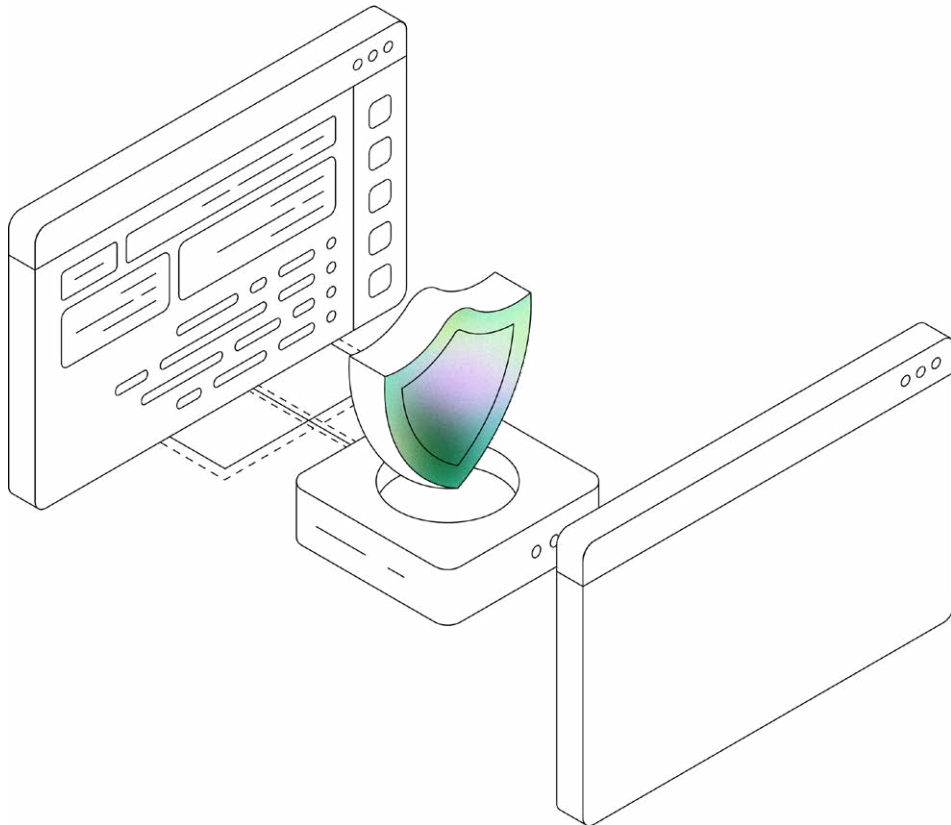


Circularity

Data Erasure



At KOcycle, we prioritise reuse wherever possible. Since day one, we've partnered with the best, exclusively using Blancco technology for all data erasure. Our team is Blancco-trained and continuously evaluates new Blancco technologies to ensure the best solutions for our clients.



COMPLIANCE

We partner with Blancco because of our shared commitment to upholding the highest standards and ensuring global compliance. Blancco holds some of the most rigorous data erasure certifications, demonstrating their proven effectiveness. These certifications, awarded through independent quality and performance testing, serve as the strongest assurance of both product excellence and the integrity of its development environment.

OUR IMPACT

35,000+

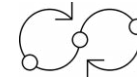
Data Erasure Events
Per Year

100%

Blancco Trained
Engineers

Circular IT

WHAT IF ONE PERSON'S TRASH COULD BE ANOTHER'S TREASURE?



Technology That Puts The Environment First

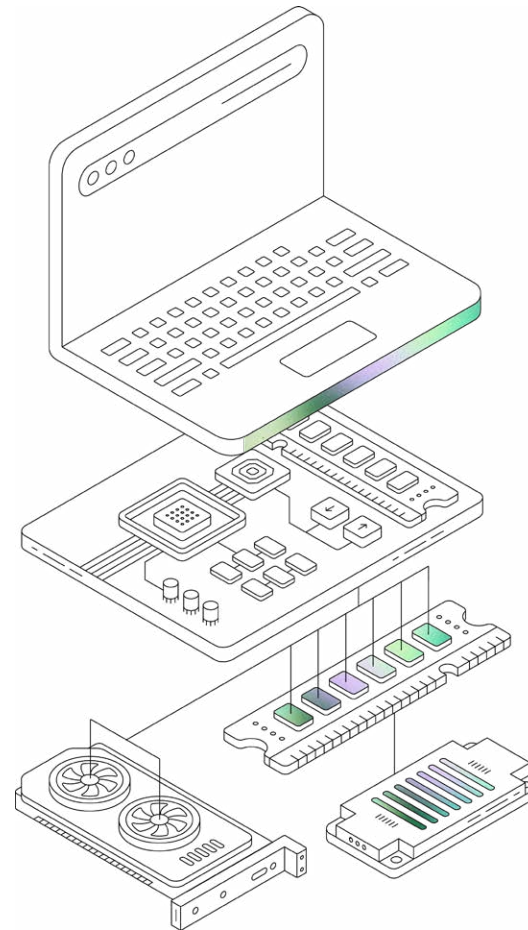
THE PROBLEM

The Circular Economy questions how we view End of Life products and aims to reuse components as much as possible; this is especially true when it comes to electronic waste and IT Asset Disposition strategies.

KOcycle provides a range of solutions that harness the power of the circular economy.

Technology significantly impacts the environment, not only from the CO2e created, but also from the water and minerals utilised. With technology consumption growing exponentially, the UN now report E-Waste as the worlds fastest growing waste stream.

Our solutions help you to save costs and come with the same high levels of warranty and support that tend to be associated with buying new.



OUR IMPACT

upto 70%

Cost - Savings

95%

Environmental Impact
- less than buying new

100%

Quality

Giving Technology A Second Life

SOLUTIONS

Choosing refurbished or remanufactured doesn't mean compromising on quality. At KOcycle, we use the latest diagnostic and quality assurance tools to ensure every piece of equipment meets the highest standards. Plus, all our products come with the KOcycle warranty, with the option to extend coverage for up to five years, giving you complete peace of mind.

JML

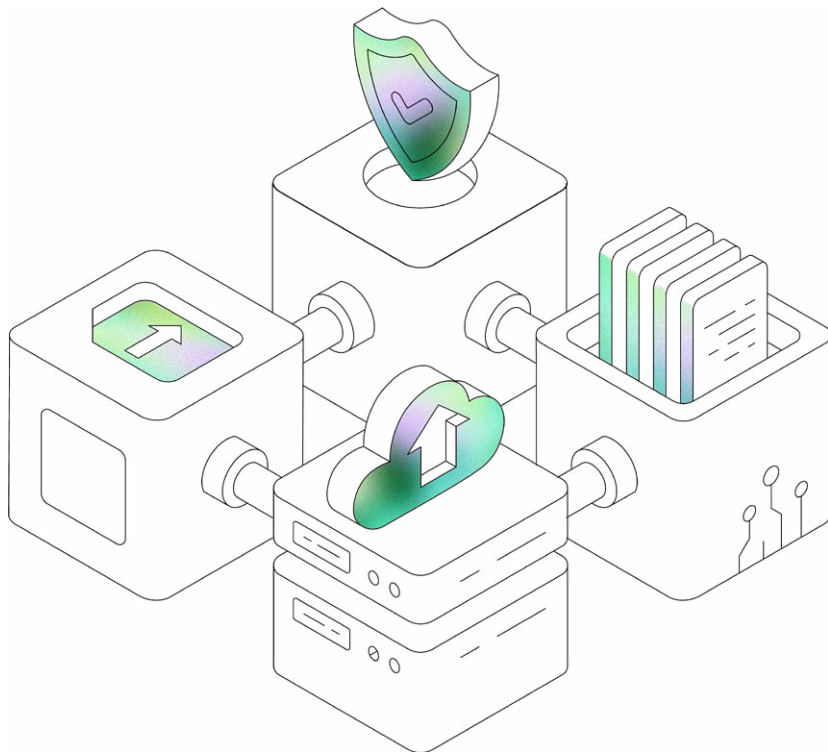


Improve user experience and limit downtime

INFORMATION UPDATE

Supporting Your Joiners, Movers, and Leavers Process - Seamlessly. Our JML service acts as an extension of your team, backed by award-winning technology and a passionate, committed service delivery team. We design JML programmes that provide peace of mind while ensuring every user has the best possible experience, whether joining or leaving a business, in-office or remotely.

Currently supporting users across the UK, Europe, and beyond, we tailor each service to your business, delivering a bespoke programme from transition to go-live.



OUR IMPACT

2000+

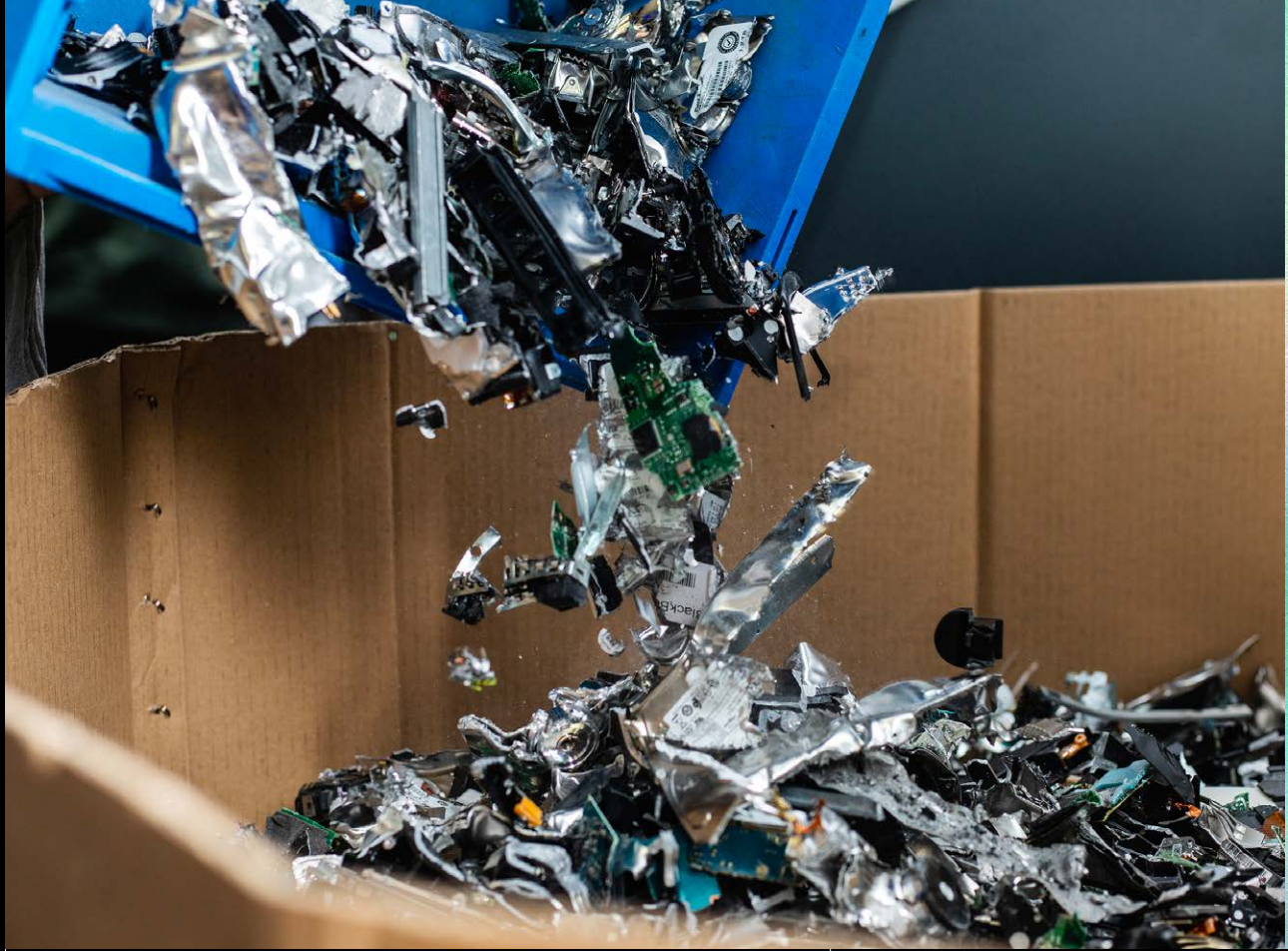
requests per year

100%

CSAT



IT Services



ENGINEERING

DEVICE DEPLOYMENT

DATA DESTRUCTION

RELOCATION

Engineering

Engineering support across multiple technologies

KOcycle's Level 1 engineering services allows you to tap into our extensive network of experienced and skilled engineers across the globe. Whether you are upgrading and rolling out a new equipment install or performing a technology migration, the varied skillset of our technical engineers enable KOcycle to support all of our clients.

- DESKTOP DEPLOYMENT
- MOBILE AND LAPTOP DEVICE ROLLOUT
- WAN/SDWAN IMPLEMENTATION
- NETWORK CONFIGURATION
- DOMAIN MIGRATION
- TELECOMMUNICATION SYSTEMS
- INFRASTRUCTURE SERVICES
- TECHNICAL DELIVERY
- REPAIR
- PRE-BUILD OPTIONS



20+

Specialisations

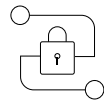


Global Service

Device Deployment

1000+

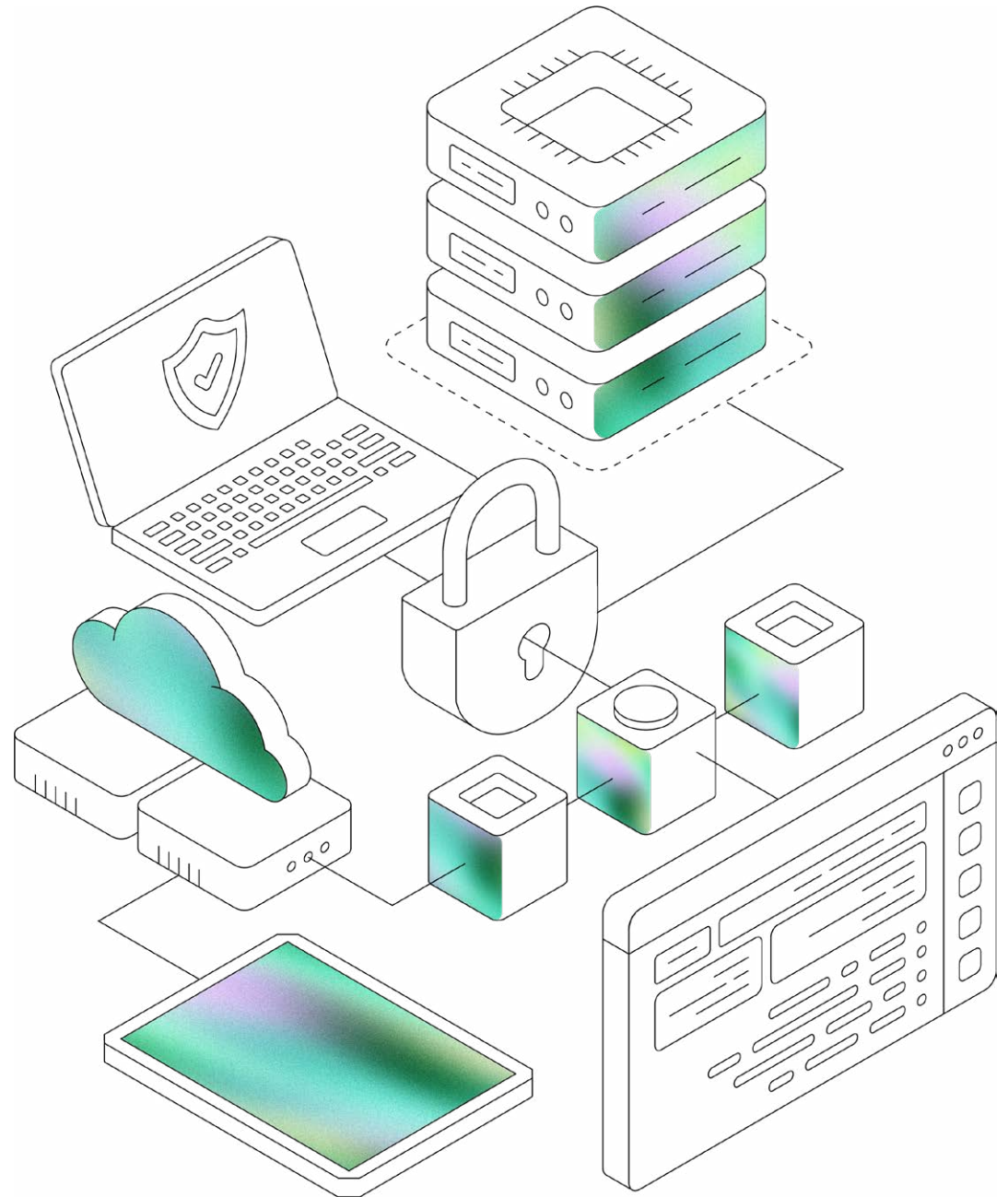
devices configured a year



Secure dedicated storage

KOcycle specialises in the deployment and rollout of IT systems and devices without interrupting your business. We plan your rollout to ensure the installation of your devices goes smoothly, providing you with the right amount of resource you require for as long as you need it.

For your upgrade or installation projects, KOcycle delivers a regular, experienced team of technical services specialists to undertake the manual work for you, saving your business cost in specialist staff training internally to complete your device rollout projects.

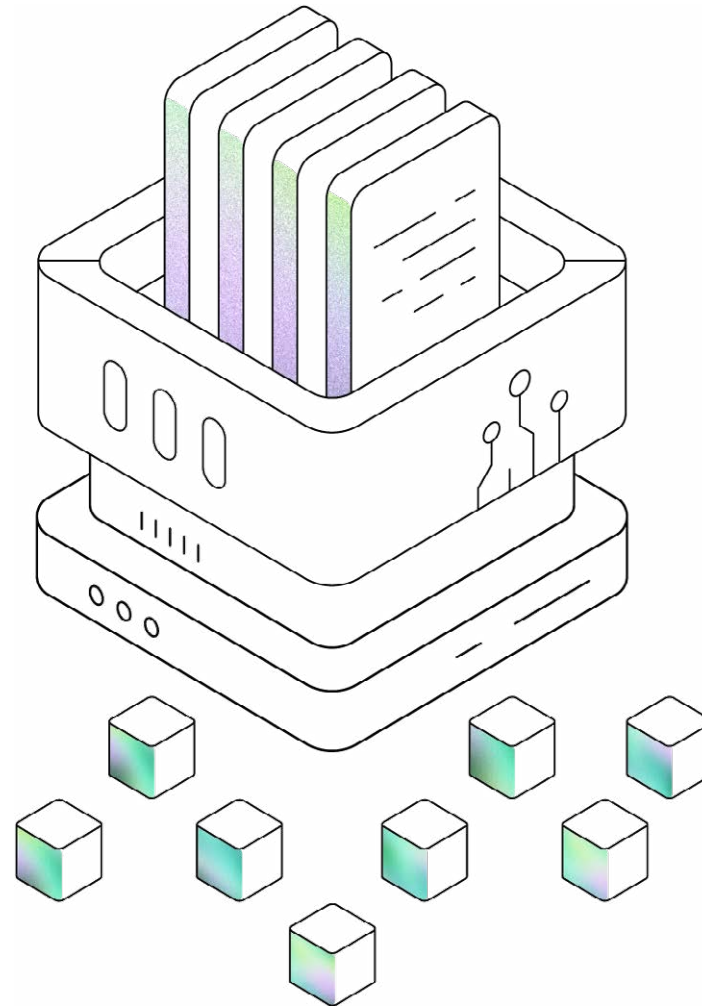


Data Destruction

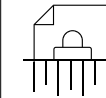
While we always prioritise reuse, there are cases where it isn't possible, either due to an unreadable data-bearing asset or its age preventing a second life.

In these instances, secure data destruction is essential. KOCycle provides both onsite and offsite data shredding using our Intimus® data granulator, which reduces disks and data-bearing assets into 6mm fragments, ensuring 100% data irrecoverability. Our powerful, high-speed machines meet security level H-5 compliance under DIN 66399.

With KOCycle, you're partnering with an industry leader dedicated to protecting your data and safeguarding your company's reputation.



DATA DESTRUCTION



via erasure or shredding.

INVENTORY VALIDATION

All serial numbers of the data bearing devices are scanned and recorded and can be validated against client inventory lists.

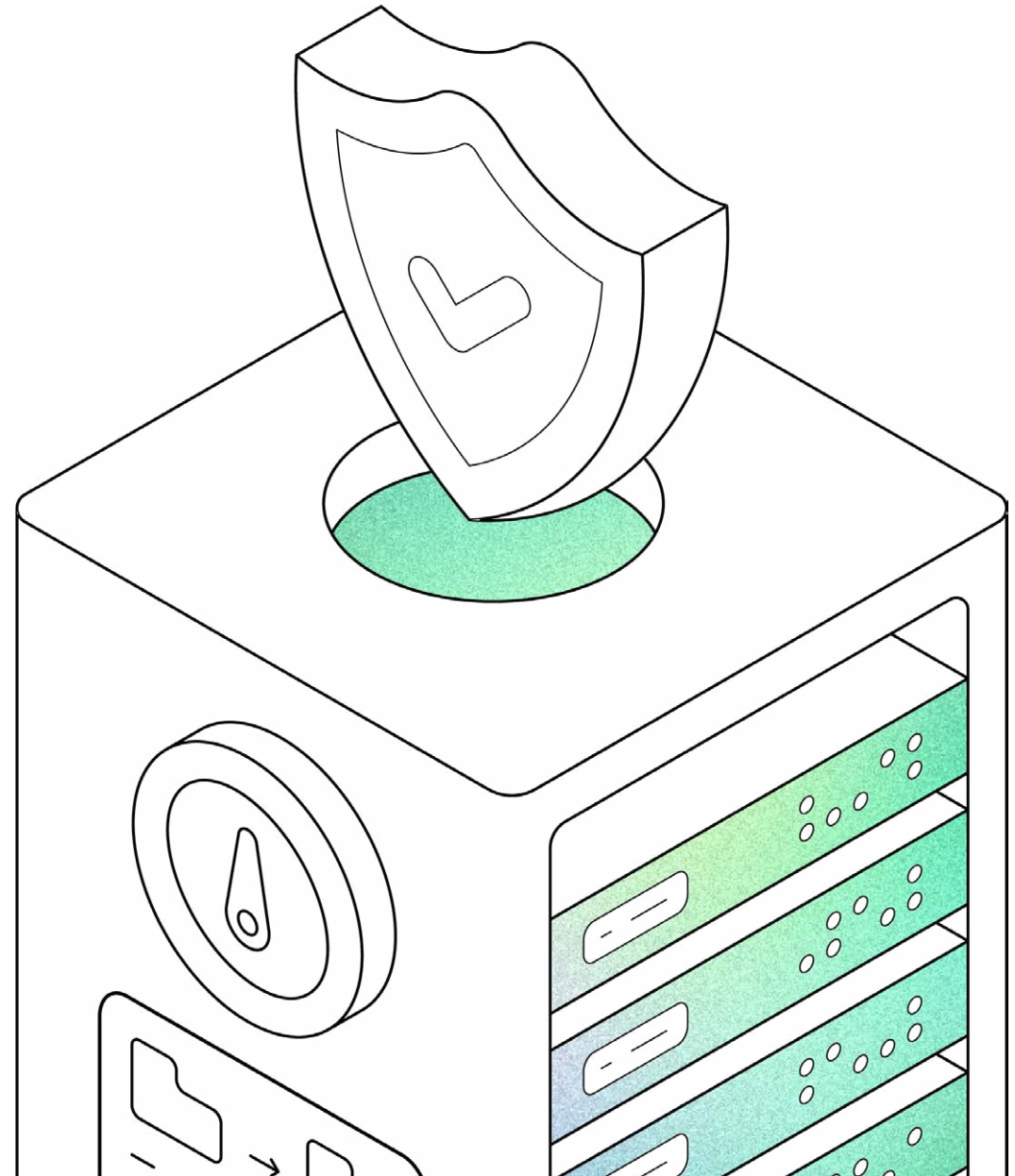
REPORTING

Detailed inventory reporting and certifications are available via KOCycle's asset tracking portal.

Secure Relocation

KOcycle understands that IT relocation is pivotal to the success of your business move. We understand that your IT and telecommunications systems are vital to your working day which is why our experts will work with you to ensure minimal disruption and downtime for your business.

We know how complex IT relocation can be and that it takes meticulous planning, movement and testing to ensure a successful relocation project. Our packing materials have been designed specifically for IT relocation projects which ensure the safe transit of your systems.



KODI

DIGITAL INCLUSION SHOULD BE BLACK & WHITE

1000+

devices donated
to good causes

£100,000+

raised for charity partners,
Delivering Social Value

OUR MISSION

Promote digital inclusion through
donating technology to those that
need it most.

THE PROBLEM

We're in an environmental and societal crisis caused by the rise in technology consumption.

USA

62million

tonnes (Mt) of e-waste was produced in 2022, Up to 82% from 2010

32%

rise is expected by 2030, to 82 million tonnes

2.4million

people are still unable to complete a single basic digital task to get online

5million

workers will be acutely under skilled in basic digital skills by 2030

UK PARLIAMENT

£ Billions

of pounds worth of strategically-valuable resources squandered

1%

of rare earth element demand is met by 2-waste recycling

1.7million

households have no broadband or mobile internet access

£63bn

is lost each year to the UK economy due to overall digital skills shortages

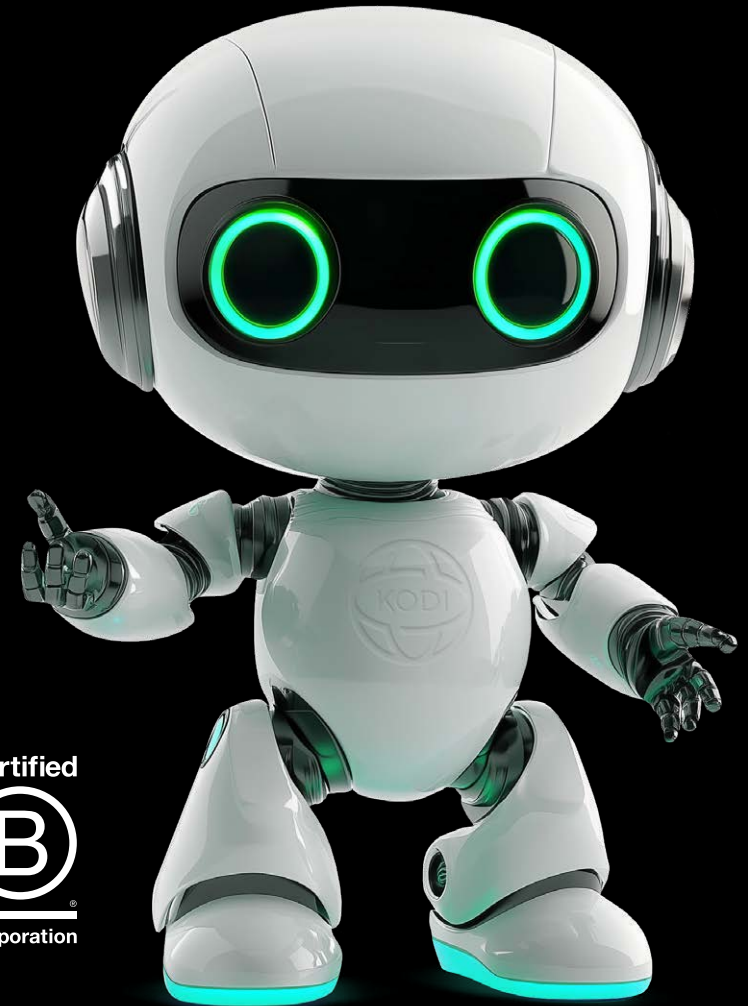
LETS TURN THE WORLDS FASTEST GROWING
WASTE STREAM INTO A FORCE FOR GOOD.

EST 2024

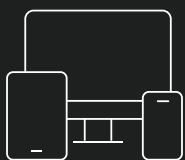
Project**KODI**

Project KODI was launched as a direct initiative to connect charities with donated devices from UK businesses and organisations, leveraging technology to create a positive impact on society.

CHARITIES WE'RE ALREADY SUPPORTING



KODI IMPACT



PROMOTING DIGITAL INCLUSION

The purpose of project 'KODI' is to get technology into the hands of those who need it most, promoting the reuse of fully working technology by donating it directly to charitable causes in the UK.



PROMOTING REUSE

We facilitate the donation of technology to registered charities in order to allow access to market leading, second hand technology at no cost. Ensuring charities can reach their goals and go further with the adoption of technology.



MEASURING SOCIAL VALUE

We measure the impact of the donation to the charity, capturing social value metrics over the lifespan of the donation.

JOIN US

QUALIFICATION REQUIREMENTS

1

UK Registered charity

You're a UK registered charity looking for technology donations

2

1-5 Devices

You're looking for between 1-5 devices to aid your charity achieve more

3

Use Case

You're looking for divided to aid your fundraising enable your users

Sustainability



24.4 tonnes
of CO2e Sequestered

100,000+
Trees planted

1million+
assets diverted
from landfill

Our mission is to deliver technology services that make a real difference, placing social responsibility at the heart of everything we do, driving positive change for people and the planet.

We are a purpose-driven business focused on transforming the world's fastest-growing waste stream—technology—into a force for good.

We split our commitments down into three core categories – ESG and measure our approach to business under the B Corp standard.



1 ENVIRONMENTAL

From an environmental standpoint – We adhere to the highest standards ensuring all technology is processed with the environment in mind.

Our targets have been approved by the SBTi, and we are dedicated to aligning our business and goals with the United Nations SDG's. We are also voluntary signatories of Techies Go Green and have established a baseline for our own CO2e consumption and greenhouse gas emissions under the GHG protocol.

2 SOCIAL STANDPOINT

We do all we can to promote and enhance social value. We have a number of charity partners who we support not just with device donations but additional financial contributions. Our team participates in Donate a Day, and our charity steering committee is regularly involved in initiatives that give back to our local community.

KODI was launched in 2024 to bring greater structure to our offering. With hundreds of devices already donated, our goal is to become the leading provider of free devices to those who need them most.



3 GOVERNANCE

At KOcycle, we hold ourselves to the highest standards of governance, recognising that both our team and supply chain are integral stakeholders in our business. As a Real Living Wage Employer, we champion diversity, equity, and inclusion within our workforce.

We want our KOcyclers to feel proud of the company they represent and the positive impact they help create. That's why we continuously review our business practices, promoting ethical standards, board diversity, stakeholder engagement, and shareholder rights. Our team is central to everything we do, and we believe their contributions should always be recognised and valued.



01276 402 528

helloko@kocycle.com

www.kocycle.com

HEADQUARTERS

Units 2 & 7D Lakes Industrial Park,
Braintree, England,
CM7 3RU

REGIONAL OFFICE

5b Stanhope Gate, Stanhope Road,
Camberley, Surrey, England,
GU15 3DW

IRELAND OFFICE

Penrose Wharf,
Penrose Quay,
Cork City, Cork, Ireland