

Sustainability Summary

143

Assets collected

120

Recycled

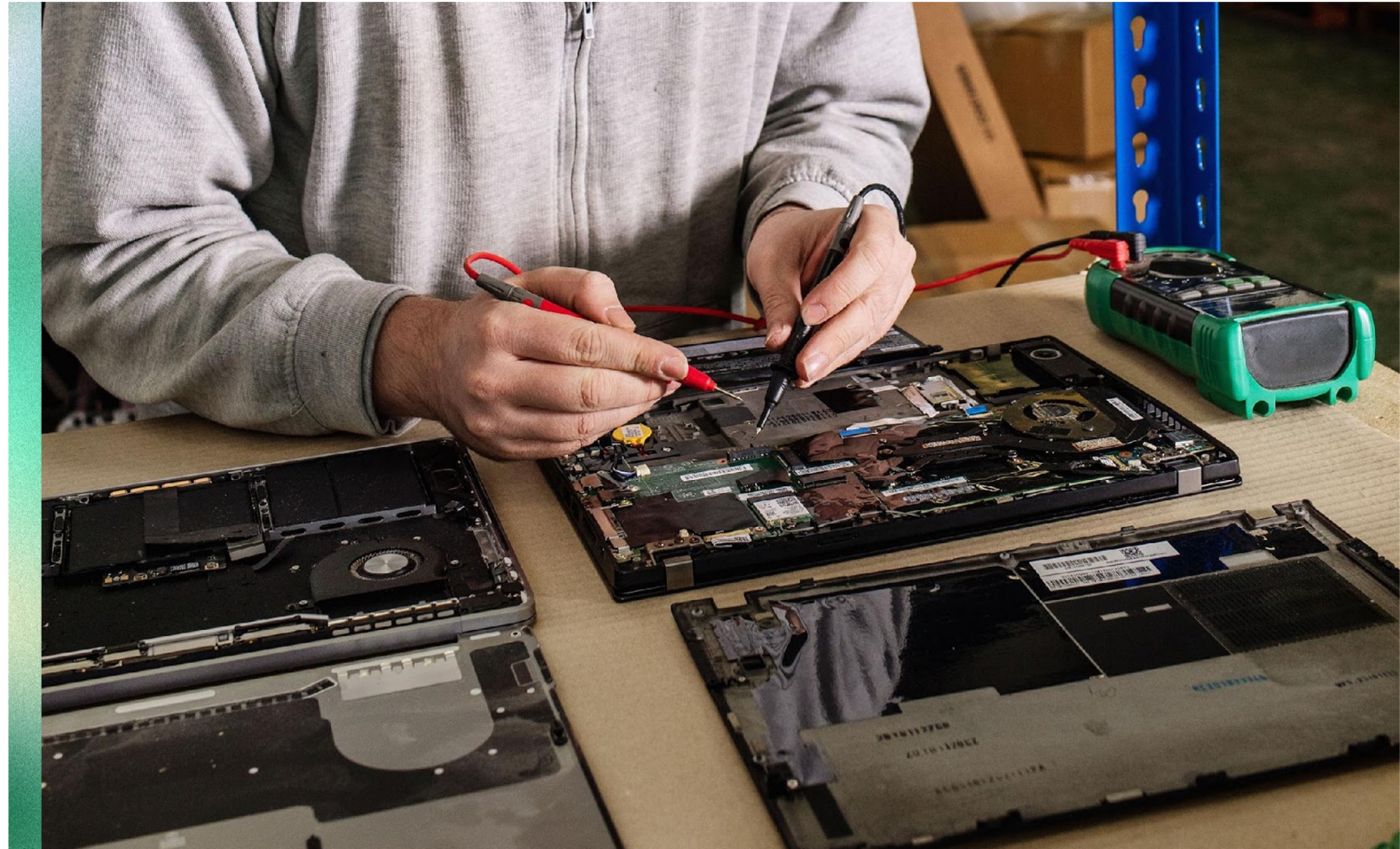
23

Reused

0%

To Landfill

00 of these assets were laptops



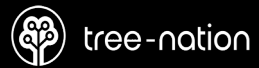
Estimated savings

5,900 KG CO₂e

from reaching the atmosphere through the need of new equipment being manufactured

10 Trees

Planted in our
KOcycle Forest



Sequestering 5,900 KG CO₂e

Based on an average 40-year tree life expectancy

Equates to 1 UK citizens or approximately *(Source Pawprint Eco)

40 days

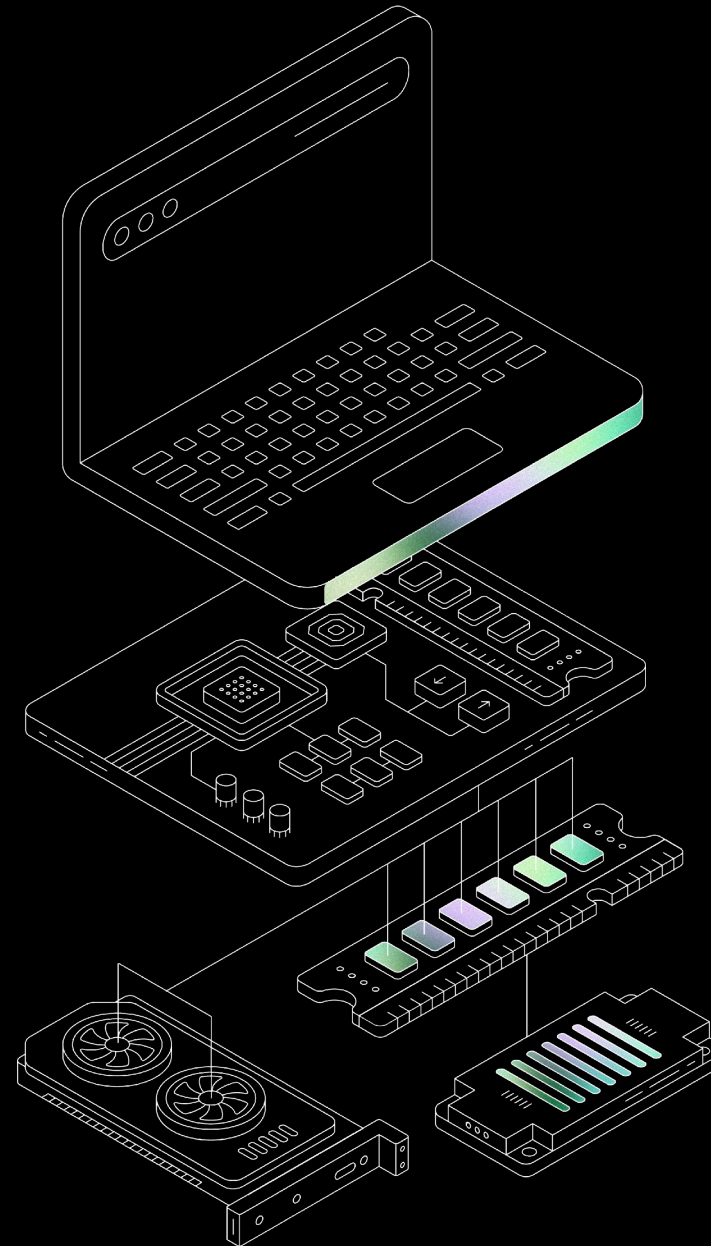
of continuous heating of
an average UK home

1150 miles

of driving in an average
car in the UK

500 Steaks

of average steaks, from
cattle reared in the UK



Did you know



To manufacturing process
to produce one laptop
uses;

190,000 litres of drinking
water.

That is the equivalent to a
lifetime supply of drinking
water for 9 average people.

For every laptop repurposed it
saves 1200 KG'S of Mineral
of Minerals from being mined.

In 2024, KOcycle enabled the
plantation of over 22,000 trees
of varying species.

Expecting to sequester over
21,000 tonnes of CO₂e
throughout the tree's lifetime.

Planting trees is essential for
the environment and the
longevity of our planet.

Social Impact

KOcycle was built to make a difference. Our award-winning Digital Inclusion Programme delivers essential technology to those who need it most, with thousands of devices donated to date. We also play an active role in the communities we serve, supporting local charities, running team volunteering initiatives and organising fundraising activities, from food bank donations to marathon runs. Our Charity Steering Committee help to ensure we stay focused and impactful, all year-round.

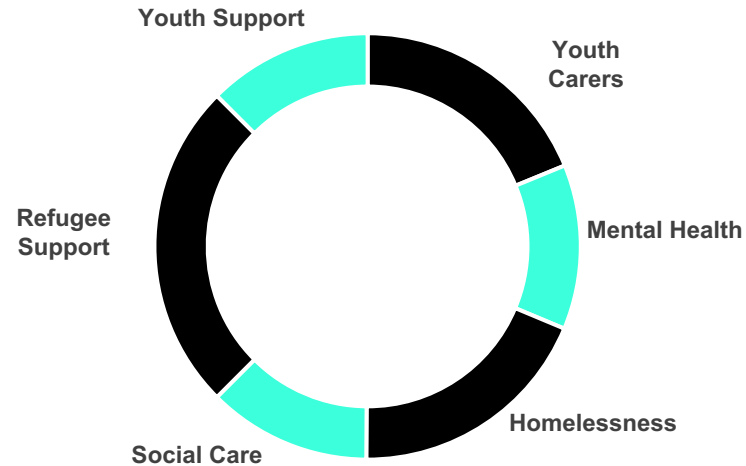
You supported



Community TechAid are a grassroots charity based in South London with a vision to combat the digital divide, enabling sustainable access to technology and providing education and support to extend digital inclusion to all.

KOcycle are committed to supporting Community TechAid by donating 100 devices per month to support varying organisations & communities, where access to technology is lacking, yet paramount to improve the quality of life for those in need. Digital inclusion is about more than access to a device & Wi-Fi, it is enabling the skills, equipment and space to fully engage and benefit from the online world of today.

Areas Supported



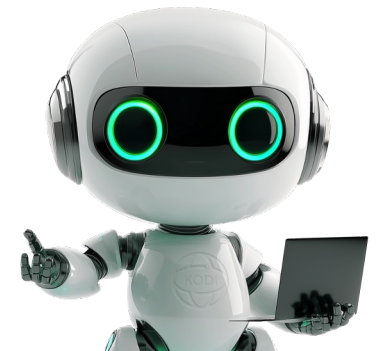
Fundraising & Collaboration

Digital access

Digital skills & Education



Charities we're already supporting



Your partnership helps us do even more

At KOcycle, we've always been driven by a commitment to create positive social and environmental impact. By working closely with our internal teams and external stakeholders, we aim to drive meaningful, lasting change.

£100,000+

Raised for charity Partners, delivering Social Value

1000 + devices donated to causes that need it most

CUSTOMER PARTNERSHIPS

Our customers are essential to our mission and we're proud to partner with like-minded organisations to drive sustainability and social value. From launching Tech Amnesty programmes to rewarding partners who champion sustainable practices, we're always looking for new ways to create shared impact. We actively seek feedback through every engagement, measuring customer satisfaction (CSAT) and Net Promoter Score (NPS). We're proud to hold a CSAT of 99.5% and an NPS of 9.5, reflecting our unwavering commitment to quality and partnership.



B-Corp

As a proud certified Benefit Corporation, our mission is to deliver technology services that make a real difference, putting social responsibility at the heart of everything we do and striving to be a force for good for both people and the planet.'



Support the Goals

Our partnerships guide what we do and how we work. Since 2020 we have partnered with Support the Goals to align our business to the United Nations Sustainable Development Goals.



Techies Go Green

A movement of IT and tech-oriented companies who are committed to being green and verifiably sustainable.



Tree-Nation

We partner with Tree-Nation to promote reforestation, helping us to sequester the carbon related to technology consumption. Over the past four years alone, we have planted more than 80,000 trees and we are committed to growing this number in 2025.

Thank you for doing your part for the planet



A NEW ERA OF TECH LIFECYCLE



silver ITAD partner



Certificate No.314102019



Certificate No.314112019



Certificate No.373432021



01276 402 528
 hello@kocycle.com
 www.kocycle.com